

Twisco

SLT 415 B
Evolution


The multi-purpose pocket telehandler !


- Transportable
- Compact
- Manœuvrable
- Rough terrain




 **MANITOU**


Twisco SLT 415 B Evolution

 **Lifting capacity** (with forks carriage)1500 kg
(500 mm load centre)

 **Lifting height** (with forks carriage)3.93 m
Max. front reach2.30 m


 **Tyres**
Front and rear10 x 16,5 10 PR SKS
Option HT : tyres 31 x 15,5 - 15

 **Skid steer loader carriage**
In option : hydraulic line at boom head and back to tank
(250 bar/40 L/mn)

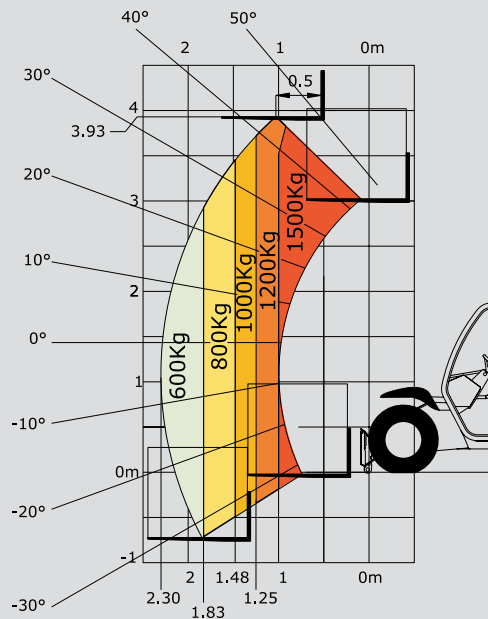
 **Perkins 404 C22 engine**
Capacity4 cyl. - 2216 cm3
Power(ISO/TR 14396) 50 HP/38 kw
Rated speed2800 r.p.m
Max. torque143 Nm at 1800 r.p.m
Coolingwater

 **Transmission**hydrostatic
3 wheel drive
Reversing shift on JSM joystick
Travel speed : 13.5 km/h
Parking brakeson front wheels

 **Hydraulic**
Main geared pump250 bar/40 L/mn

 **Weight** (with carriage and forks)2570 kg
Overall width1662 mm
Overall height1900 mm
Turning radius (rear wheel axle)2225 mm
Turning circle2380 mm
Drawbar pull(laden)1890 daN
Ground clearance258 mm

This publication in no way constitutes an offer and the company reserves the right to alter specification without prior notice.
The MANITOU models presented in this brochure can be supplied complete with optional equipment attachments.



Rough terrain standard EN 1459 B

SKID STEER LOADER ATTACHMENTS ADAPTATION



Bucket



4x1Bucket



Grab Bucket



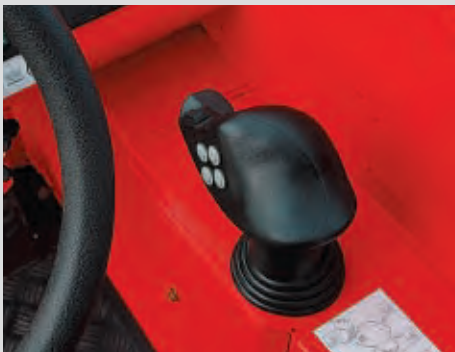
Sweeper



Concrete mixer



CALL US FOR MORE INFORMATION



JSM (Joystick Switch and Move)



Transportable