

# BRONTO SKYLIFT S 90 HLA

## SPECIFICATIONS

Specification	Metric	Imperial
Working Height	90.00m	295ft 3in
Platform Height	88.00m	288ft 9in
Working Outreach @600kg SWL	29.50m	96ft 9in
Working Outreach @400kg SWL	31.00m	101ft 8in
Slew	360°	
Width	Travelling	2.50m / 8ft 2in
	Working	7.00m / 23ft
Height (stowed)	4.00m	13ft 2in
Length	15.60m	51ft 2in
Gross Vehicle Weight	48,000kg	105,840lb
Platform Capacity	600kg	1,322lb
Platform Size (Extendable)	2.50m - 3.70m x 1.05m	8ft 3in - 12ft 2in x 3ft 5in
	0.95m x 0.75m x 0.05m	37in x 30in x 2in

## FLOOR LOADINGS

Surface	Metric	Imperial
Maximum Outrigger Pressure	15kg/cm <sup>2</sup> or 1471kN/m <sup>2</sup>	30720lb/ft <sup>2</sup>
Max. Ground Pressure using Outrigger Spreader Pad	3.80kg/cm <sup>2</sup> or 372.70kN/m <sup>2</sup>	7783lb/ft <sup>2</sup>



**IDEAL FOR**

- Wind farms
- Inner city and outreach work
- Bill posting
- Oil refinery work/shutdowns
- Crane inspections

# 90m

## CASE STUDY

### NATURE OF JOB:

Essential maintenance work on a 47-storey hotel in the UK.

### REASON FOR CHOOSING THIS MACHINE:

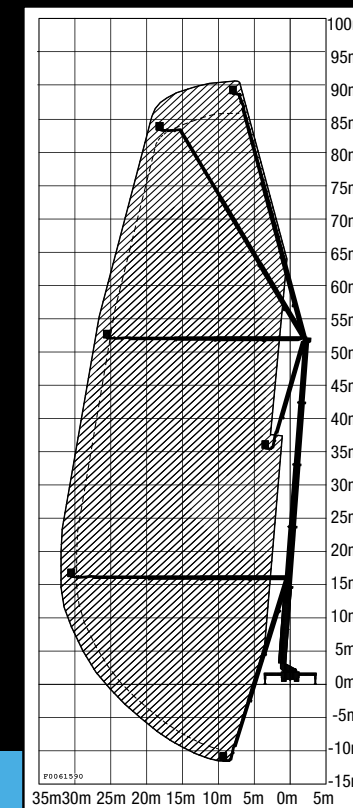
90 metre height, capacity in basket, safety, expert operator, speed.

### CHALLENGE:

Essential maintenance work had to be carried out on a 47-storey city centre hotel while working to a strict deadline. At a height of 168m (551ft), access proved challenging.

### EQUIPMENT:

Bronto S90 HLA



## SOLUTION



Our customer had to carry out challenging work at heights of up to 90 metres in a limited space, with weight and load bearing considerations. In addition, there were traffic management challenges to keep members of the public out of danger and banksmen were on site during operations.



The 90 metre machine replaced a lot of the traditional rope access and Building Maintenance Unit (BMU) requirements, saving the customer time and money. Our expert operator worked closely with the customer to provide safe and efficient completion of the challenging work.



- Max Jack force 270KN.
- Point load with standard pads 750mm 950mm=3.8kg/cmsq.
- Point load with 4xsleepers under standard pads
- 2.3kg/cmsq

BRONTO SKYLIFT S 90 HLA